

Figure 1 (a) Positive ion ESI mass spectrum of A with accurate masses (± 3 ppm)

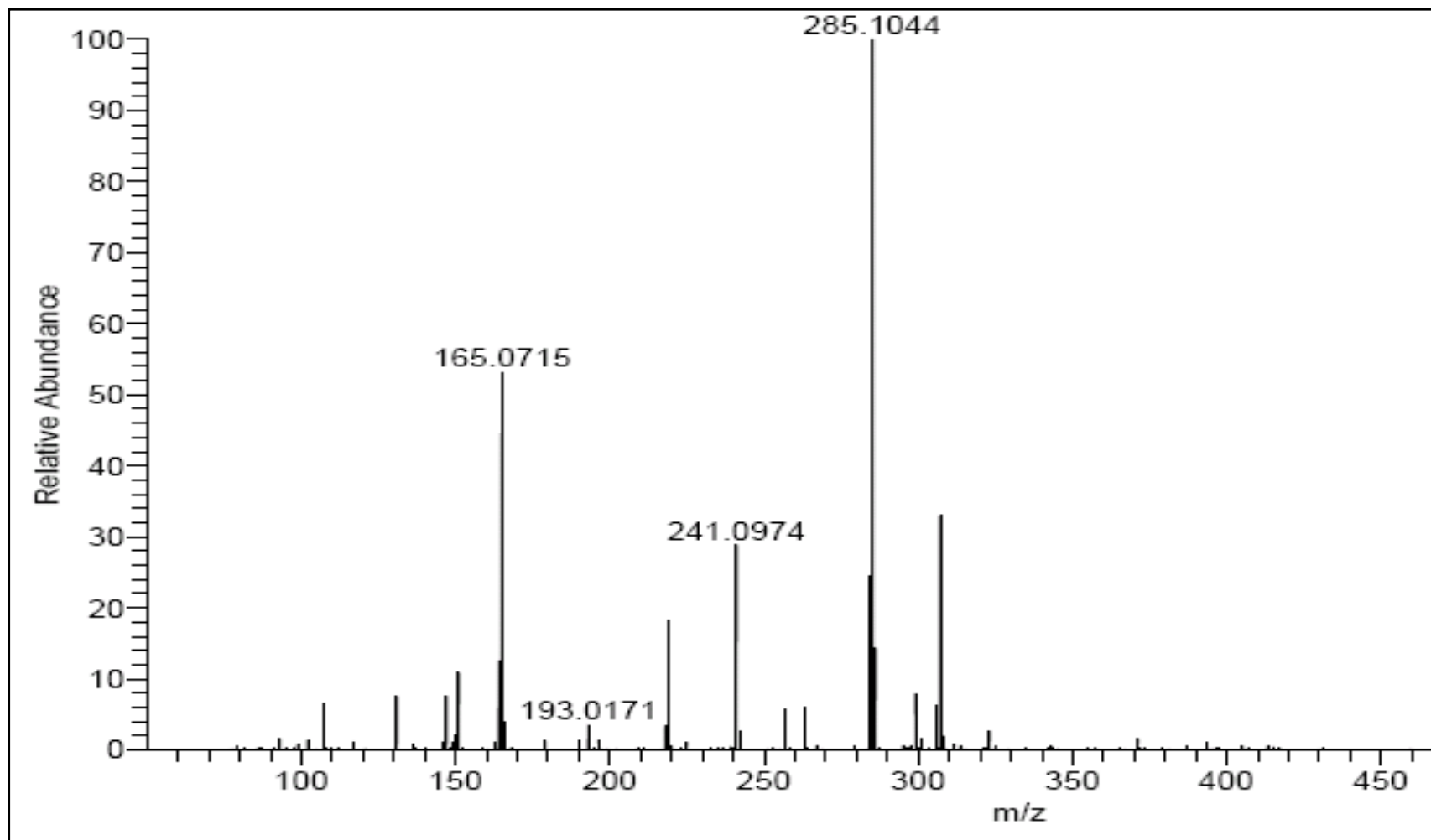


Figure 1 (b) ESI mass spectrum molecular ion region;
(c) predicted isotope pattern of the $[M+H]^+$ species of A.

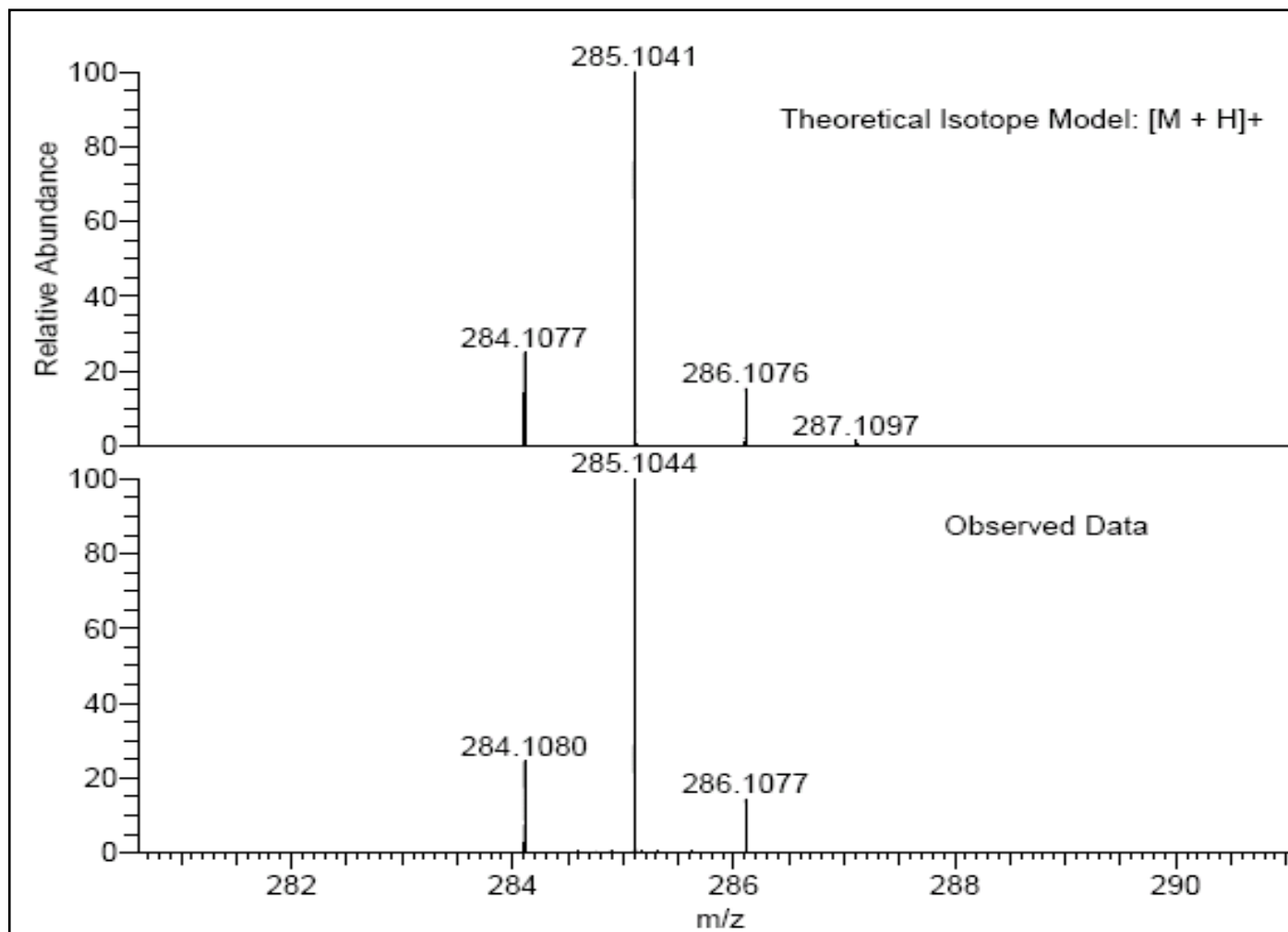


Figure 2 EI mass spectrum of A

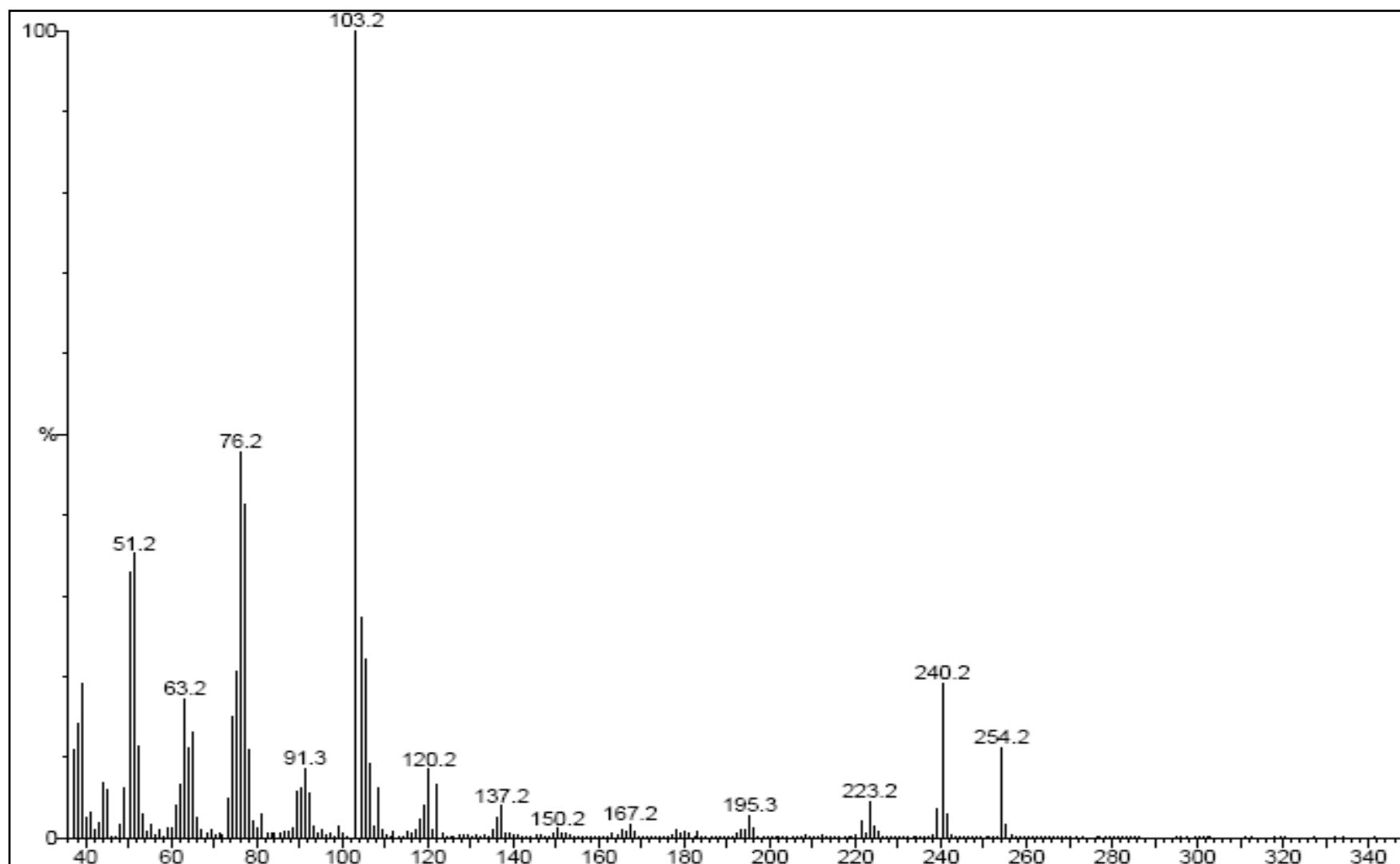


Figure 3 – CI(NH3) mass spectrum of A

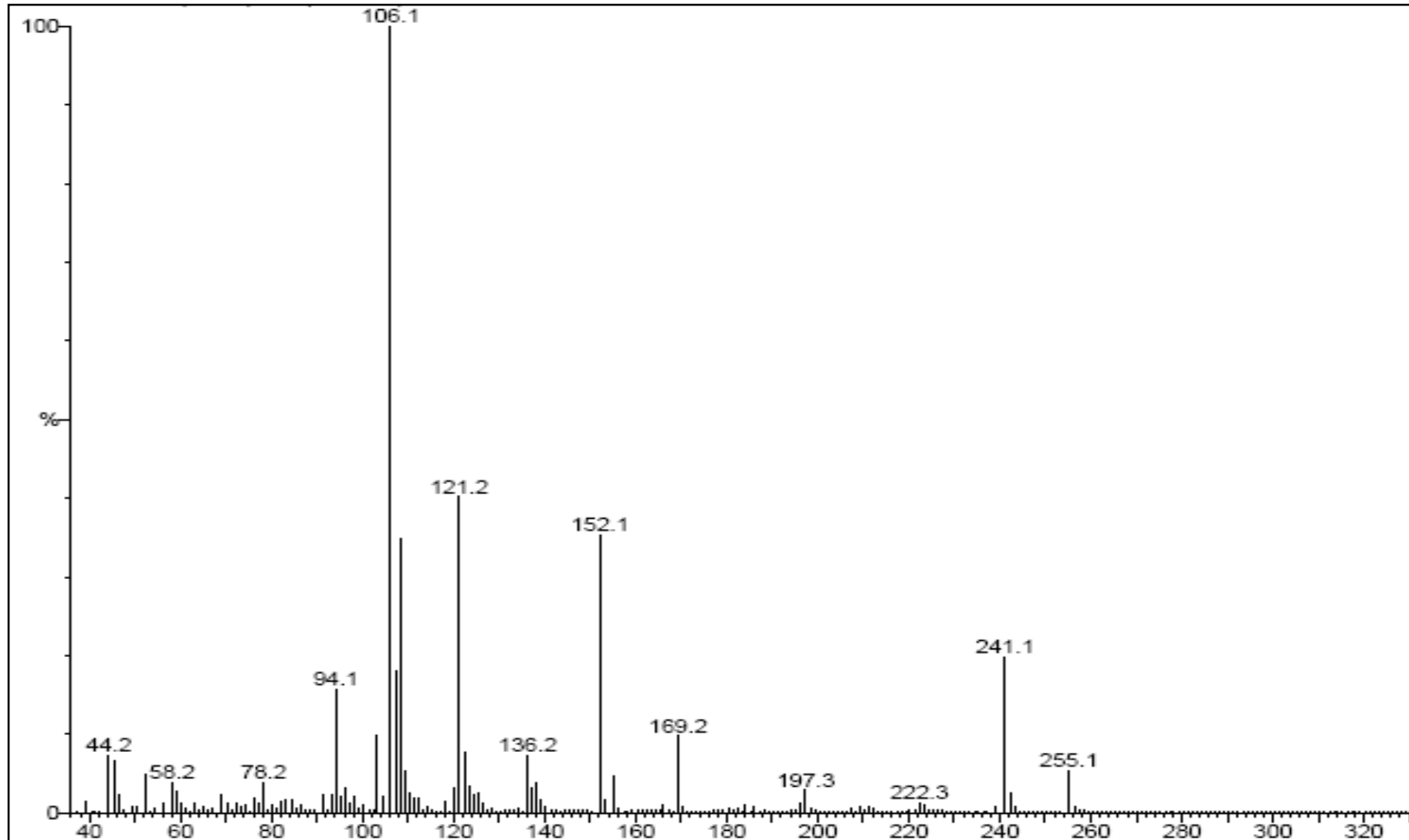


Figure 5 EI spectrum of A after reaction with ethyleneglycol

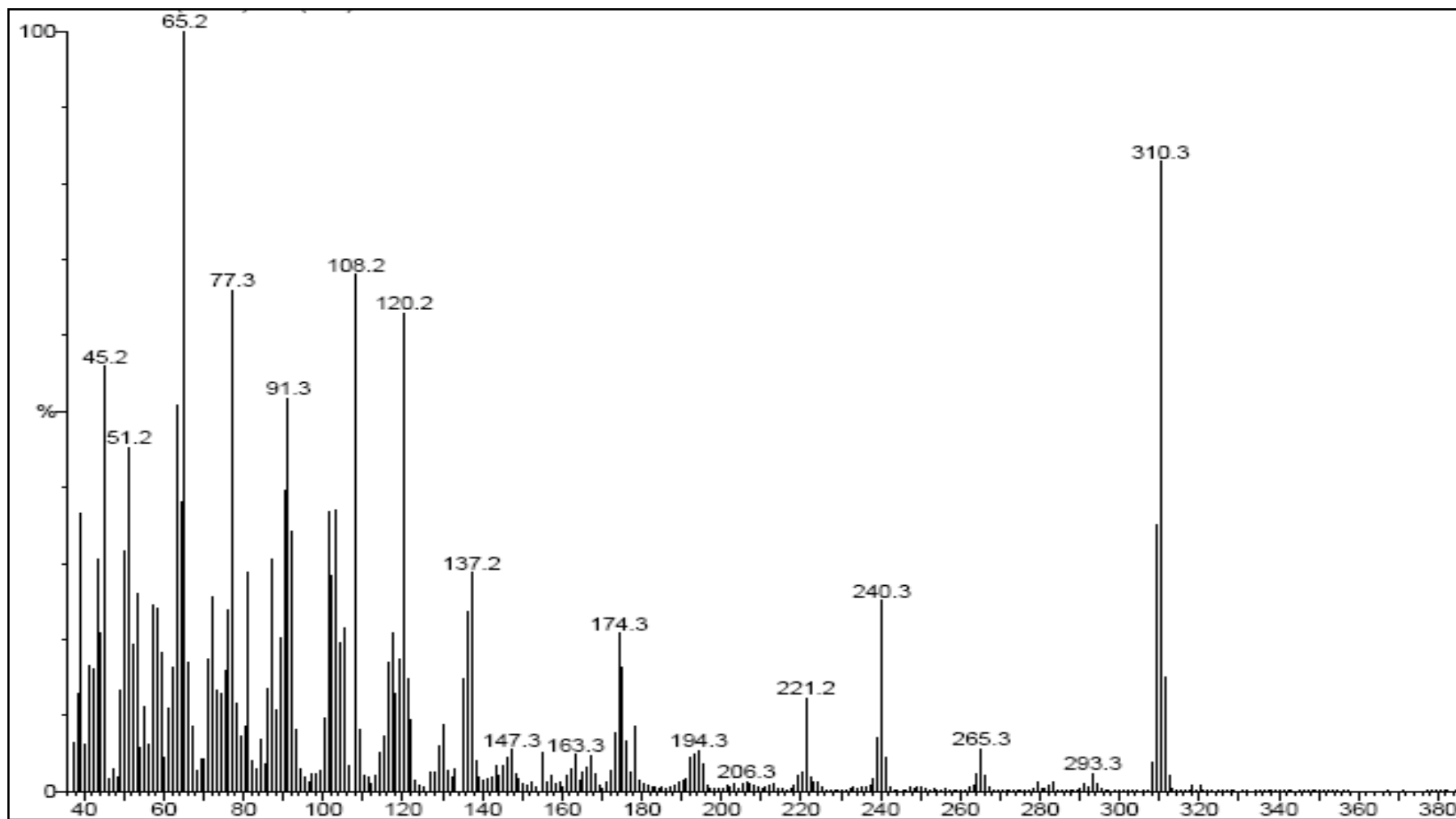


Figure 6 CI spectrum of A after reaction with ethyleneglycol

